



CAPABILITY PROFILE

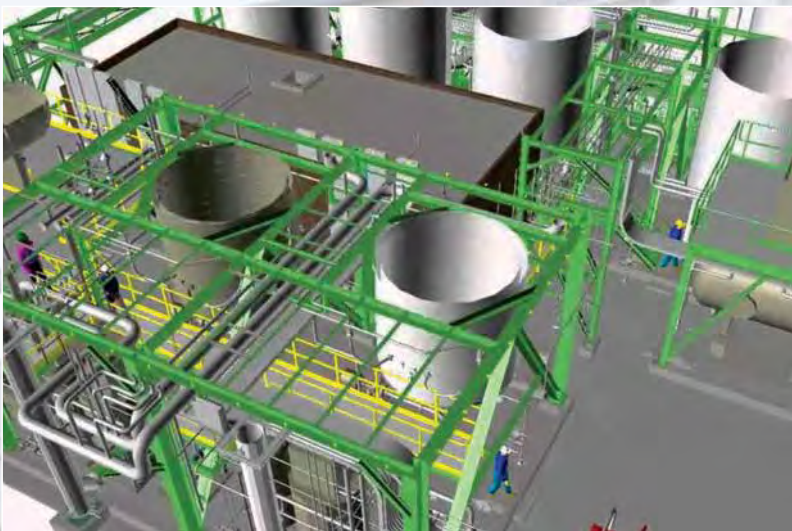
INSTECH GROUP PTY LTD
Level 4, 10 Northumberland Street,
South Melbourne, VIC, 3205
Ph +61 3 8393 1888
Tel: +61 411802339
Fax +61 3 9686 7552
info@instechgroup.com.au
www.instechgroup.com.au

Instech Group Pty Ltd is a specialist engineering company within the Oil and Gas Industry.

INSTECH GROUP PTY LTD PROFILE OVERVIEW

Instech Group Pty Ltd is an engineering and project management company providing services to the oil and gas industry, energy utility companies, financial institutions, government and other parties. Instech Group Pty Ltd specialises in the through-life management of pipeline projects and related infrastructure. Our design engineering and project management experience includes onshore pipelines and onshore facilities. Our experience covers the range of services from concept evaluation and assessment through to detailed design, project implementation, operational support and commissioning.

Instech Group Pty Ltd have been responsible for the engineering design and project management of extensive pipeline infrastructure projects in Australia. This experience includes above ground and buried facilities and services. When performing engineering design activities our extensive experience in the operation of gas infrastructure allows us to produce designs which are cognisant of operational requirements. Our experience covers a wide range of consulting and contracting roles.



KEY CAPABILITIES

Our main areas of expertise are Feasibility Studies, Conceptual Design, Detailed Engineering, Project Management and Construction Management. Our competencies in these areas are outlined below.

General

- Feasibility studies
- Business Cases Preparation
- Prepare Scope of work definitions
- Front End Engineering Design
- Prepare cost estimates
- Project Economic Assessment
- Evaluation of new supply sources & offtakes
- Prepare basis of design
- Perform detailed design
- Full AutoCAD drafting Services
- Prepare detailed technical specifications
- Prepare construction drawings
- Procure equipment and materials
- Prepare tender documentation for construction
- Evaluate bids
- Provide construction management services
- Provide inspection services
- Manage commissioning and handover of facilities

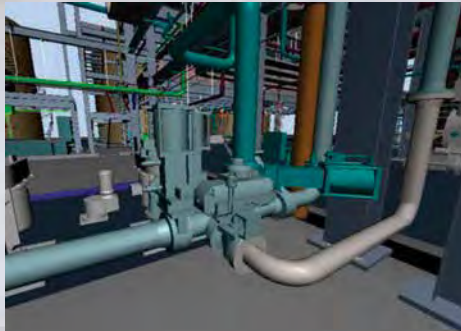
Facilities

- Pressure regulating facilities
- City gate stations
- Field Regulators
- Custody transfer metering
- Gas heaters
- Pigging facilities
- HAZOP studies
- SIL Workshops
- RTU Equipment
- Compressor stations

- Electrical systems
- SCADA systems
- Instrumentation systems
- Emergency blowdown studies
- Oil, gas and product lines
- Transmission systems and loop lines
- Distribution systems
- River crossings and directional drilling
- Qualitative Risk Assessment
- Live work including hot taps and stoppling
- Pipeline relocation and lowering

Engineering Disciplines

- Electrical
- Controls & Instrumentation
- Civil
- Structural
- Mechanical
- Pipelines
- Process



Supporting Services

- Procurement
- Quality assurance
- Design Verification (RPEQ)
- Materials engineering
- Hazardous Area Assessments
- Inspections



Instech Group Pty Ltd CAPABILITY STATEMENT

EXPERIENCE

The following is previous key experience profiles

Alinta, Queensland Gas Pipeline Design Review, 2007 - 2008

- Provided Detail Design Review services on behalf of Alinta
- Review services included review of the Fracture Control Plan and compliance with AS2885

Balec Pty Ltd, Esso Offshore Module Project, 2007

- Initial Scoping of project including the development of a scoping study – Detailed Engineering Consultant
- Provided Detailed Instrument and Electrical Engineering Design for a portable construction office suitable for transporting to Esso Australia's offshore Platform
- Office Module consisted of Pressurising/Ventilation system suitable for a Hazardous Area, Electrical Power Distribution, Fire and Gas detection/associated controls
- Provided Construction and commissioning support



Jemena, Horsley Park Meter Station Upgrade, 2008 - 2009

- Initial Scoping of project including the development of a scoping study – position Project Manager
- Front End Engineering Design – Project Manager over seeing design consultant

Jemena, EGP Expansion projects, Longford 4th Compressor project, 2008 - 2010

- Initial Scoping of project including the development of a scoping study – position Project Manager
- Front End Engineering Design – Project Manager over seeing design consultant
- Project Implementation – Principle Engineer responsible for over seeing detail design consultant and procurement activities
- Commissioning engineer for cut over of the new DCS and other major upgrades whilst minimising outages to the station

UGL, Hazardous Area Assessment of Gas Pipeline, 2009

- Carried out a Hazardous Area Assessment study for a new gas pipeline line from Alinta's Bellbay Gas Station to the new BellBay combined Cycle Gas Turbine Generator Power Station
- Preparation of a Hazardous Area Assessment report for compliance with Australian Standards
- Preparation of Hazardous Area layout drawings for the new gas pipeline

Alinta, Tallawarra Gas Pipeline – Hazardous Area inspection/Audit, 2009

- Carried out detailed Hazardous Area Inspection Sheets for all the associated Instrument and Electrical equipment associated with the facilities for this new pipeline
- Assisted in fault finding and scoping the rectification work required to comply with Australian Standards

Jemena, Rotating Equipment Operations Engineering Support, 2011

- Provided Rotating Equipment Engineering expertise for 6 months whilst Jemena where finding a replacement engineer
- Responsible for providing operations engineering support to all their Rotating equipment including their Solar Turbine driven compressor units and Gas Engine Alternators

Comdain Gas - SP AusNet Phoenix St Regulator Upgrade, 2013

- Design of replacement pressure regulators and associated pipework.

Adetra - Tamar Valley Power Station, 2014

- Instrument, Electrical and Controls Design of new Sulphuric Acid Storage facility.

Saipem – GLNG pipeline project – RPEQ design Verification services, 2013

- Provided Registered Professional Engineering Qualification design verification services for the Electrical, Instrumentation and communications disciplines.

Comdain Infrastructure – Multinet Gas Leongatha City Gate Design, 2013/2014

- Design of new Leongatha City Gate including Gas Heater and Pressure Regulation Facilities from FEED through to detail design.